

# Rose Historic Chapel

The EQ Repair & Strengthening Process

**IN PICTURES**











First the Deconstruction

















Then Starts the  
Reconstruction

























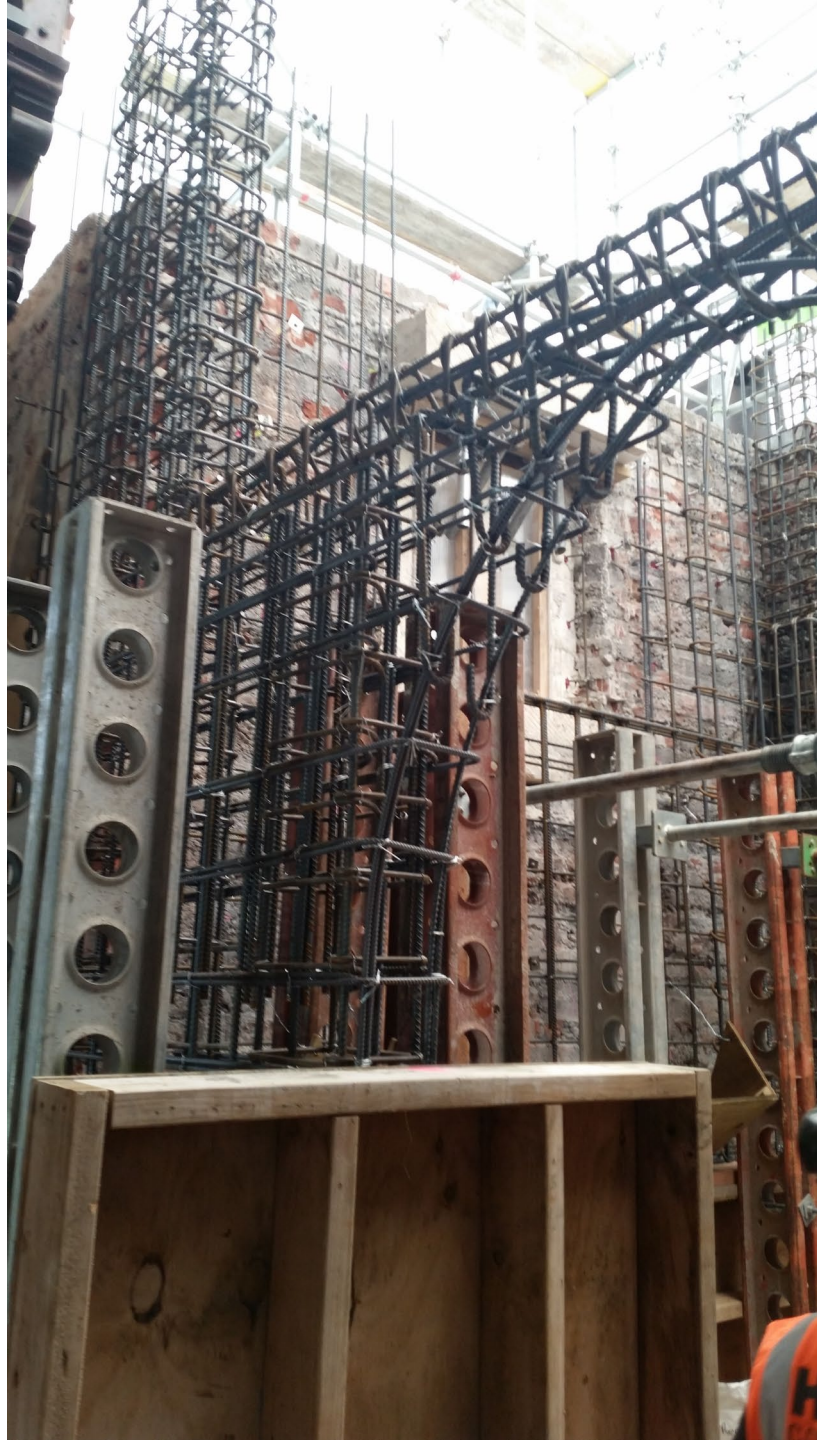








































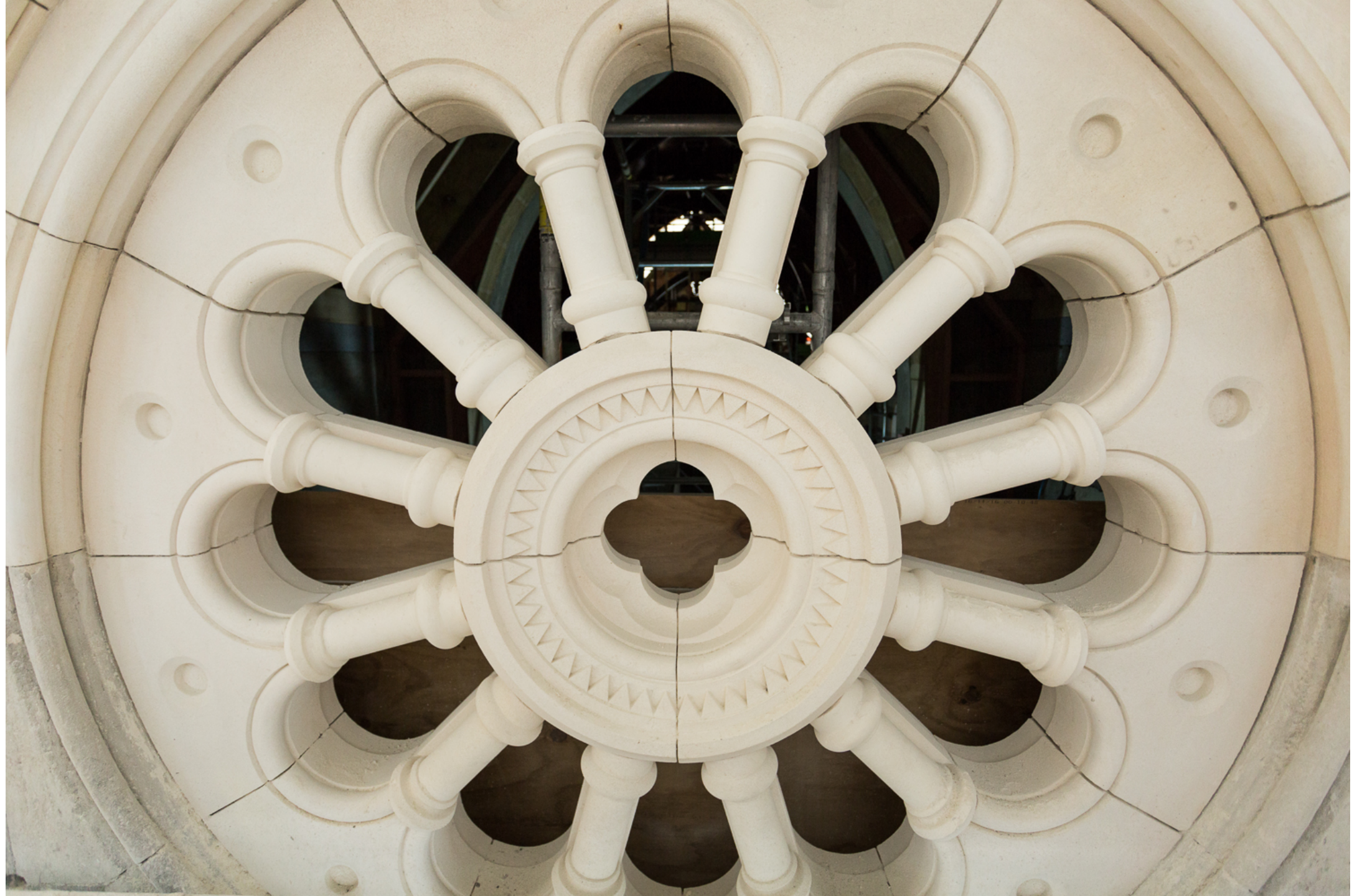
Nearing Completion After 18  
Months







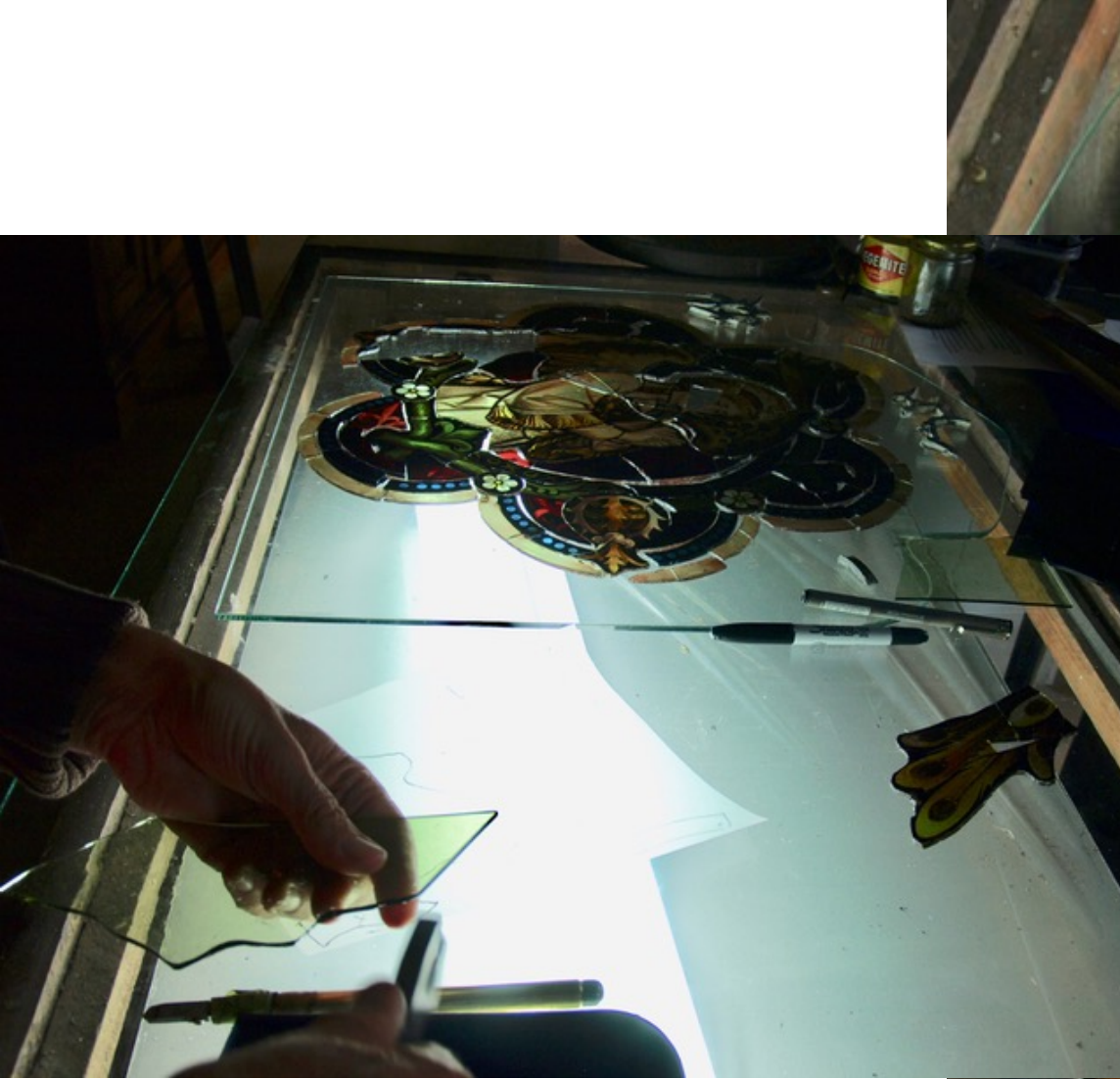
















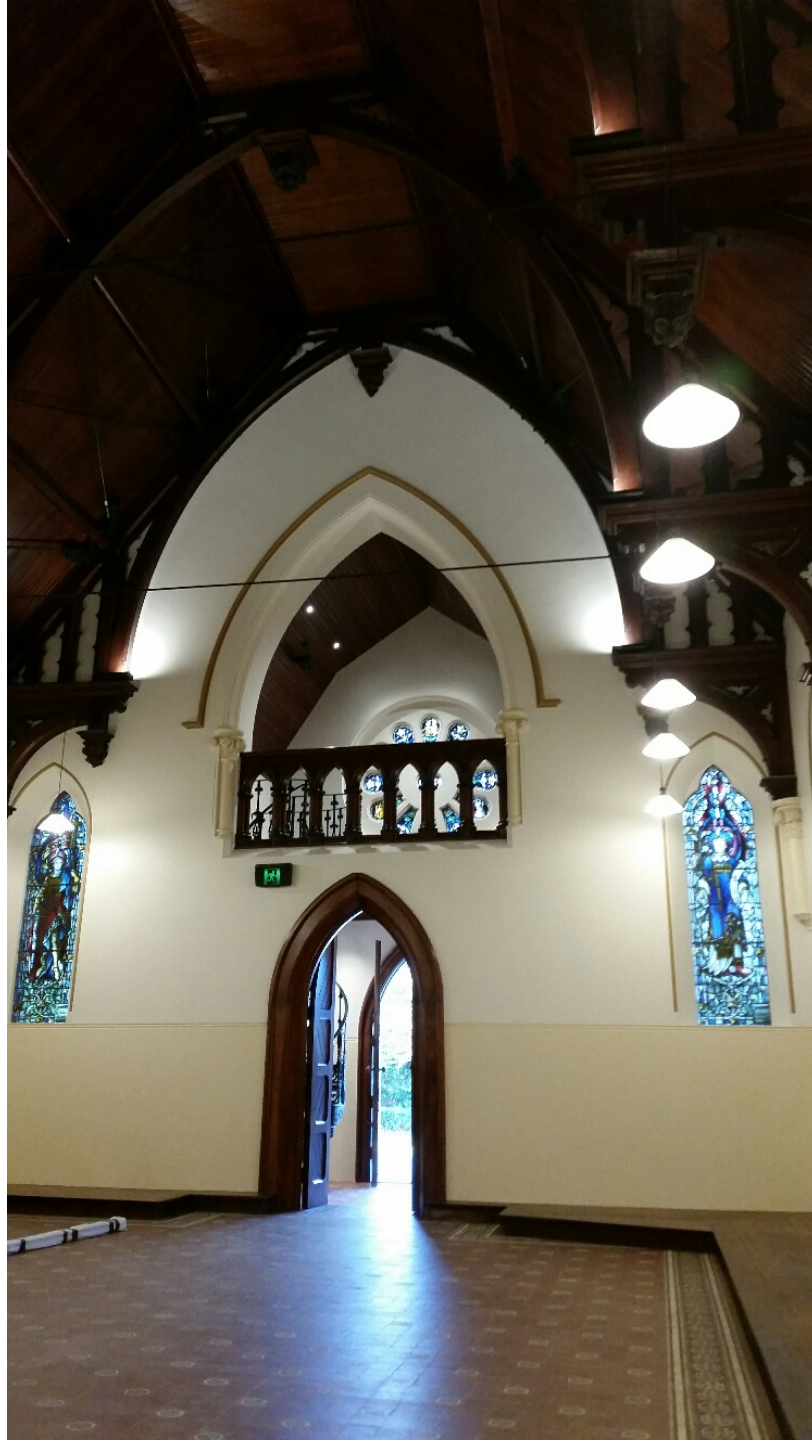


































# The End

The completion of a construction project where it took just under two years and over 40 specialist contractors to complete. The end result for everyone that worked on the Chapel is one of pride that will be remembered for years to come.

